



	Jeju Special Self-Governing Province
	Jeju City
	Korean
	697,263people (Total population / in 2021, Sept)
	Temperate Oceanic Climate
	Jeju International Airport
	10.2 Million (The number of tourists coming to Jeju Island)
	Korean Won (KRW)

Jeju is an island located in south-west of the Korean Peninsula. It is the biggest island of Republic of Korea. Basalt rocks cover more than 90% area of this universal volcanic island. An island strategically positioned connecting Continents (Russia, China) and Oceans (Japan, South-East Asia). A universal recreational island with beautiful natural landscape received as a gift from nature.



Looking for Jeju Travel Information?

Jeju Travel Hot Line

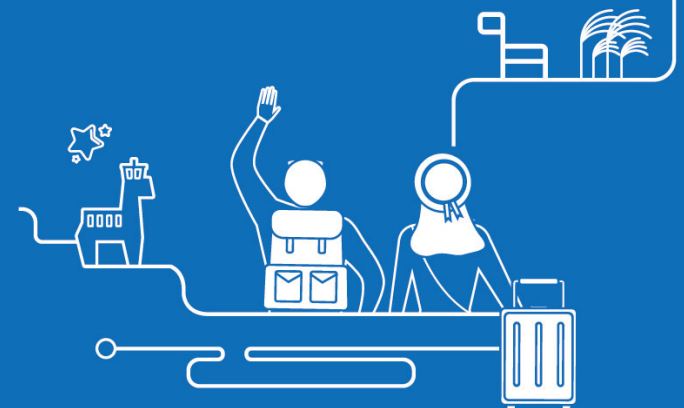


Inquiries: 09:00 - 18:00 (available year round)



Jeju Tourism at a glance

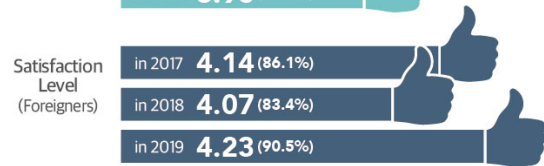
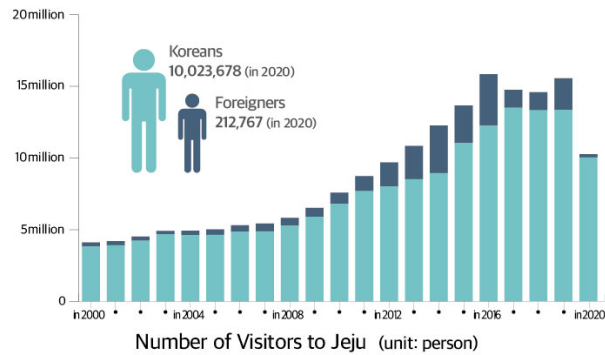
www.ijto.or.kr



Jeju
Jeju Special Self-Governing Province

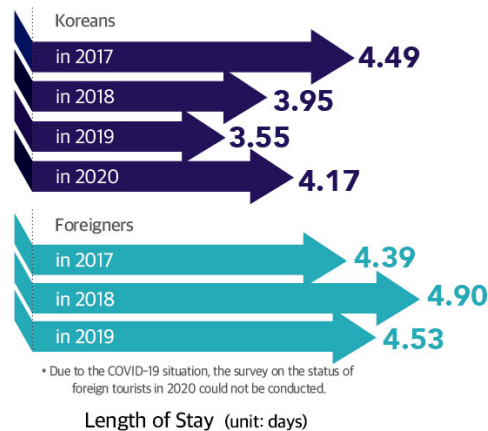
JEJU TOURISM
ORGANIZATION

Visitor Statistics

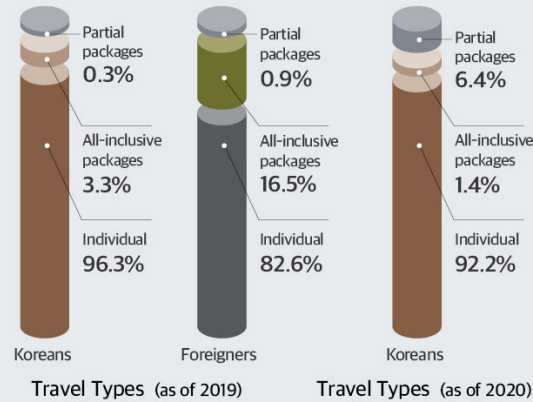


* Due to the COVID-19 situation, the survey on the status of foreign tourists in 2020 could not be conducted.

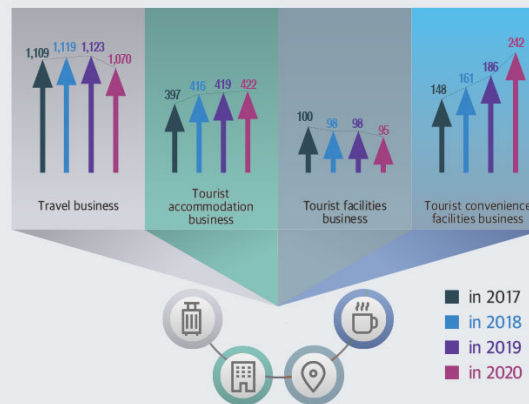
Satisfaction Level of Jeju Visitors
Satisfaction level calculated using the 5-point 'Likert Scale'.
'Satisfied' respondents shown as '%'.
Length of Stay (unit: days)



* Due to the COVID-19 situation, the survey on the status of foreign tourists in 2020 could not be conducted.



Tourism Industry Statistics



Number of International Conferences (unit: times)

